

## Company Profile & Product Catalogue

### CONNECTOR

MXM Connector  
Circular Sensor Connector  
M.2 Connector  
SO DIMM Socket  
Memory Card Socket  
SIM Card Socket  
Mini PCI Socket / Mini PCIe Socket  
Smart Card Socket  
FPC Connector  
HDMI Connector  
E-SATA Connector  
RJ45 Connector  
Pogo Pin Connector  
USB 2.0 / USB 3.0 / USB Combo Connector  
SPDIF Jack  
Board to Board Connector  
DC High Power

### CABLE

Rugged Waterproof Cable  
M5 / M8 / M12 / M23 to wire harness  
LAN Cable  
RF Cable Assembly  
FPC / FFC Cable  
USB Cable  
Wire Harness  
HDMI Cable  
SATA Cable

## Connector & Cable Solution Provider

➤	About ATTEND	01 - 04
➤	Memory Card Socket	05 - 06
➤	PCB Card Socket	07 - 08
➤	I/O Connector	09 - 16
➤	Pogo Pin	17
➤	Micro Coaxial RF, Board to Board, FPC, DC High Power	18
➤	Cable Assembly	19 - 22

## About ATTEND

### Why "ATTEND"?

I have often been asked if the word "ATTEND" has special meaning. Over the past two decades, I have been involved with many electronic components such as semiconductor, connector, and cable. These components have to be used by customers in their projects, which create our opportunities to sell.

Therefore, I profoundly realize that the most important thing of a successful enterprise in this industry is to proactively take part in the customers' product design. As a result, "attend your business", "attend your project", are the common philosophy of our team.

Furthermore, "attend" contains positive and active implications, so I choose "ATTEND" as our brand name. It is not only our principle, but also our promise to customers.

### What is "Connect to Your Success"?

During the growth of ATTEND, we fully understand the importance of long-term relationships between customers and us. We cannot survive alone in the environment of electronics components industrial. Only when our customers achieve their goal can we have the opportunities to success.

"Connect to Your Success" is our business philosophy. Everything we do, we do it for your success.

Attend Technology Inc.  
General Manager

  
Kenneth Fu

## Brand Identity

### Innovation

We are ATTEND, everything we do starts with our core value: "Innovation".



### Partnership

ATTEND makes an important step to collaborate and build reliable partnerships, and to keep moving forward with our philosophy.

### Attentive

As we enter a new decade of growth & prosperity, we will keep our principle of being "Attentive" and deliver our promise through a whole new "ATTEND's Way".

## Our Specialties



### Connector

As a professional connectivity solutions provider, ATTEND is your one-stop total solution provider with our complete range of connector products for various applications. Our specialty is in networking and consumer applications, in which we are able to provide not only high quality products in a timely manner, but also new professional service models that makes us your most reliable partner.



### Cable Assembly

Our cable assembly solutions provide the advantage of customization service and design-in research & development which enables early involvement + higher success rate for your innovative projects. In addition, ATTEND is also equipped with advanced tooling technology & state of the art manufacturing facilities which enables the realization of innovative products and help our customers gain a competitive edge in the market.

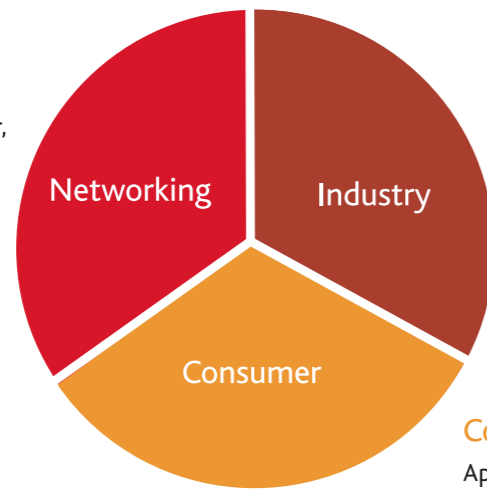
## Global Sales Channel and Target Market



Austria		France		Italy		Portugal		South Africa		Turkey	
Bulgaria		Finland		Japan		Romania		South korea		Ukraine	
Canada		Germany		Netherlands		Russia		Switzerland		U.K.	
Czech Republic		Hungary		New Zealand		Serbia		Spain		U.S.A.	
	India			Poland			Slovakia			Singapore	

### Networking System

Application: ADSL Modem/Router, IP Router, IP STB, LTE Router, WiFi Router, VOIP, 3G \ 4G Modem, GSM/GPRS Module, Sever, Storage, IoT



### Industry Application

Application: IPCAM Surveillance, Vehicle Tracking, Smart Meter, Medical application

### Consumer Electronic Device

Application : Tablet PC, Internet Audio Equipment, Portable device, Navigation Device

## Connect to Your Success

ATTEND is your most trustworthy partner and your first choice for innovative connectivity solutions.

ATTEND is dedicated to provide the world-class connectivity solutions. Our value proposition is built upon on the core principle of "Connect to Your Success". This is a common goal we share with our customers. This guiding principle drives us to develop integrated service innovations, which enables us to win in every promising market, and to connect every success in the networking business.



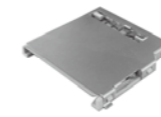
# Memory Card Socket



## SD Card Socket



### SD



SD Socket Push-Pull Type  
104C-TAA0-R



SD Socket Push-Push Type  
104D-RCA0-RA1,w/Switch



SD Socket Push-Push Type  
104D-TCA0-R06  
104D-TCC0-R06, S/O 1.8mm



SD Socket Push-Push Type  
104H-TDA0-R01, w/Card Lock

## Micro SD Card Socket



### Micro SD



UHS-II Micro SD 4.0 Socket  
Push-Push Type  
112L-TDA0



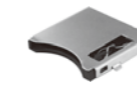
Micro SD Socket Hinge Type  
112C-TBAR-R02



Micro SD Socket  
Push-Push Type  
112J-TDAR-R01



Micro SD Socket  
Push-Push Type  
112A-TAAR-R03



Micro SD Socket  
Push-Pull Type  
112I-TDAR-R



Micro SD Socket  
Push-Pull Type  
112K-TAA0-RA1



Micro SD+SIM Socket  
112G-TA00-R

## CF Card Socket



### CF



CF Type I/II Socket  
101B-TAA0-R



CF Ejector  
101C-ESA0-R L=15mm  
101C-ESB0-R L=20mm  
101C-ESCO-R L=22mm



CF Socket Slim Type  
Standard  
101D-TAAB-R01 38.74mm  
101D-TAAA-R01 40.16mm  
101D-TACB-R01 38.74mm, s/o 1.4mm  
101D-TACA-R01 40.16mm, s/o 1.4mm



CF Socket Slim Type  
Reverse  
101D-RAAB-R01 38.74mm  
101D-RAAA-R01 40.16mm  
101D-RACB-R01 38.74mm, s/o 1.4mm  
101D-RACA-R01 40.16mm, s/o 1.4mm

## CFAST Card Socket



### CFAST



CFAST Socket Push-Pull Type  
H=6.05mm  
120A-605D00  
120B-605D00, w/card Lock



CFAST Socket Push-Pull Type  
H=8.35mm  
120A-835D00  
120B-835D00, w/card Lock  
120C-835D00



CFAST Socket Push-Push Type  
120C-605D00, H=6.05mm



CFAST Socket  
Slim Type Standoff 4.15mm  
120D-4C00

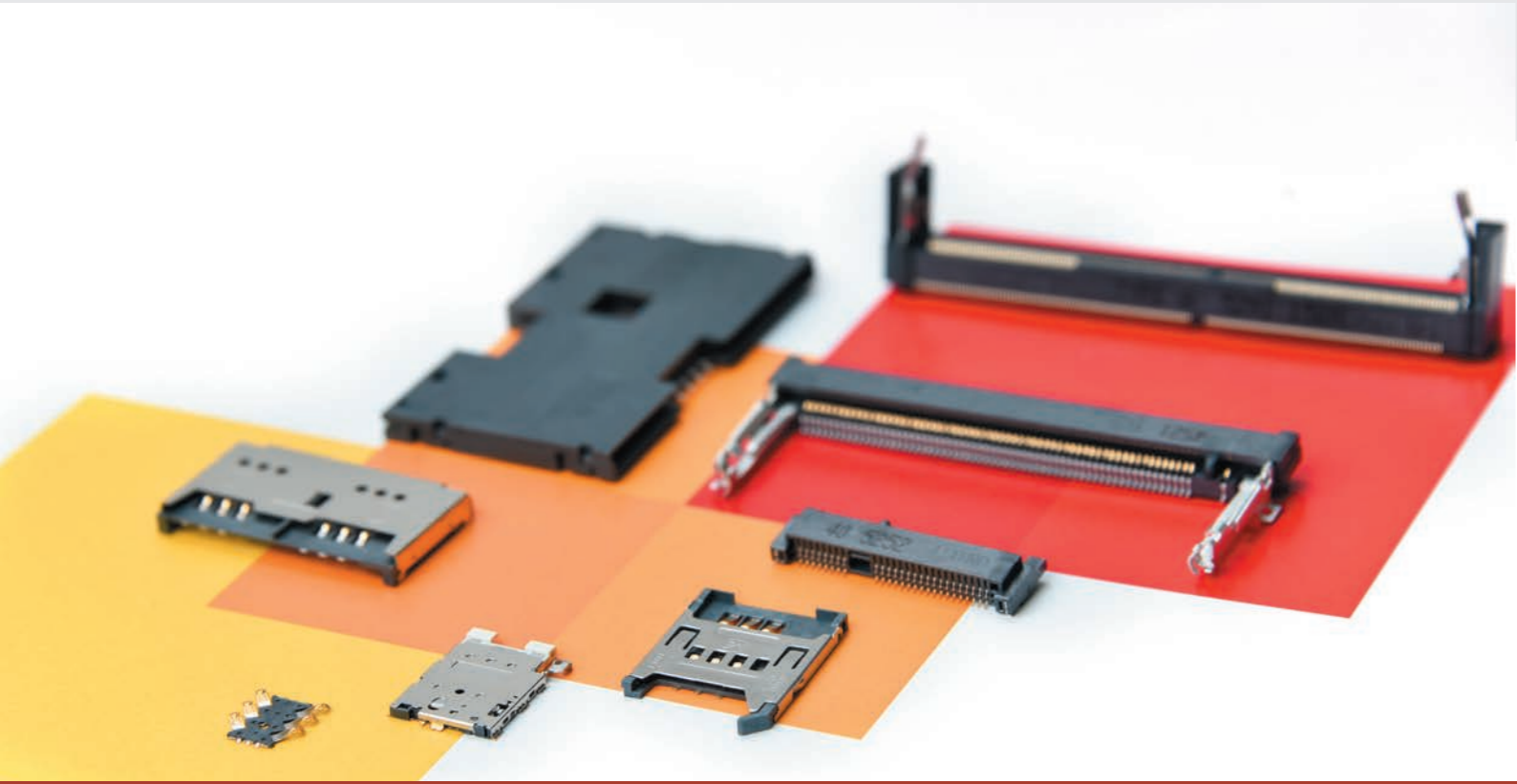


CFAST Socket  
w/o Lock, Vertical Type  
120E-0G00



CFAST Socket  
w/Lock, Vertical Type  
120E-1G00

# PCB Card Socket



## Mini PCI Express Socket



### Mini PCI Express



Mini PCI Express Socket with Nuts / Latch Standoff 4.0mm 119A-40A00-R04  
 Mini PCI Express Socket with Nuts / Latch Standoff 5.6mm 119A-56A00-R04  
 Mini PCI Express Socket with Nuts Standoff 7.0mm 119A-70A00-R02  
 Mini PCI Express Socket with Nuts / Latch Standoff 8.0mm 119A-80A00-R02  
 Mini PCI Express Socket with Nuts / Latch Standoff 9.2mm 119A-92A00-R02

## M.2



### M.2 Connector



M.2 Connector A key 123A-32AA0-R01, H=3.2mm 123A-42AA0-R01, H=4.2mm  
 M.2 Connector B key 123A-32BA0-R01, H=3.2mm 123A-42BA0-R01, H=4.2mm 123A-58B00, H=5.8mm  
 M.2 Connector E key 123A-32EA0-R01, H=3.2mm 123A-42EA0-R01, H=4.2mm  
 M.2 Connector M key 123A-32MA0-R01, H=3.2mm 123A-42MA0-R01, H=4.2mm

## Mini PCI Socket

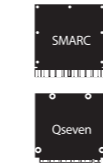


### Mini PCI



Mini PCI Socket Metal Grounding Type 114B-40B00-R02, 4.0mm  
 Mini PCI Socket Metal Grounding Type 114B-52B00-R02, 5.2mm  
 Mini PCI Socket Metal Grounding Type 114B-56B00-R02, 5.6mm  
 Mini PCI Socket Metal Grounding Type 114B-92B00-R02, 9.2mm

## MXM Connector



### MXM Connector



MXM2 230 pin-out H=7.8mm 125A-78C00  
 MXM3 314 pin-out H=7.8mm 125B-78C00

## SO DIMM Socket



### DDR4



SO DIMM Socket Vertical Type 124B-150A00, Normal 124B-150A10, Reverse



SO DIMM Socket Standard Type 124A-40A00, Standard, H=4.0mm 124A-40A10, Reverse, H=4.0mm 124A-52A02, Standard, H=5.2mm 124A-52A12, Reverse, H=5.2mm

### DDR3



SO DIMM Socket Standard Type 122A-40A00, H=4.0mm 122A-52A00, H=5.2mm 122A-80A00, H=8.0mm 122A-92A00, H=9.2mm

### DDR2



SO DIMM Socket Vertical Type 122B-150A01, Normal 122B-150A11, Reverse



SO DIMM Socket Dual Port Type 122C-42A00



Vertical Type 121B-150A00, Normal 121B-150A10, Reverse

## SIM Card Socket



### SIM Card



SIM Socket Push-Push Type 115A-ADA0-R02, 6 Pin 115A-BDA0-R01, 8Pin  
 SIM Socket Hinge Type 115B-AAA0-R01, 6Pin 115B-BAA0-R01, 8Pin  
 SIM Socket Holder Type 115C-AC00-R, 6Pin H=2.7mm 115C-AC00-01, 6 Pin H=2.6mm 115C-BC00-01, 8 Pin H=2.6mm  
 SIM Socket Slim w/switch 115F-AAA2, 6+2 Pin  
 SIM Socket Metal Hinge Type 115G-AAAA-R, 6 Pin  
 SIM socket w/ Detector Switch 115J-ACCO, 6+2 Pin, normal close 115J-ACOO, 6+2 Pin, normal open 115J-BCO0, 8+2 Pin, normal close 115J-BCO0, 8+2 Pin, normal open  
 SIM Socket, Bar Push Type w/Switch, w/Tray 115T-AEA0, 6Pin 115T-BEA0, 8Pin  
 SIM Socket Dual Type 115H-BA00

### Micro SIM



Micro SIM Card Socket Push-Pull Type 115I-AEAA, 6Pin 115I-BEAA-RA1, 8Pin  
 Micro SIM Card Socket Slim Type 115O-AEA0  
 Micro SIM Card Socket Push-Push Type, w/Switch 115Q-BCA0  
 Micro SIM Card Socket Hinge Type 115R-BCA0

### Nano SIM



Nano SIM Card Socket, Eject Type, with Tray 115S-ACA0  
 Nano SIM Card Socket Push-Pull Type 115U-A000

## Smart Card Socket



### Smart Card



Smart Card Socket Normal Open 116G-SB00  
 Smart Card Socket two-sided Card Insertion 116F-DBC0



## USB 2.0 Connector

### Powered USB

- Powered USB Receptacle 5V Color : Black  
218B-5G01
- Powered USB Plug for Cable 5V H=14.37mm Color : BEIGE OD= 6.5mm  
218A-5D01
- Powered USB Receptacle 12V Color : Green  
218B-12G1
- Powered USB Plug for Cable 12V H=14.37mm Color : BEIGE OD= 6.5mm  
218A-12D1
- Powered USB Receptacle 1 24V Color : Red  
218B-24G1
- Powered USB Plug for Cable 24V H=14.37mm Color : BEIGE OD= 6.5mm  
218A-24D1

### USB 2.0

- USB 2.0 A Type Plug Middle Mount  
205A-DANA-R, DIP  
205A-SGNO-R08, SMT
- USB 2.0 A Type Receptacle  
205B-DAN0-R, Standard Type  
205B-DANR-R, Reverse, Shell DIP  
205B-DBNM-R, Reverse, Middle Mount  
205B-SANM-R, Middle Mount  
205B-SBN0-R, SMT Type  
205C-DAN0-R02, Vertical Type  
205F-DAN0-R, Flank Type
- USB 2.0 B Type Receptacle  
205D-DAN0-R, Right Angle DIP  
205D-SAN0-R, Right Angle SMT  
205E-DAN0-R, Vertical DIP  
205E-SAN0-R, Vertical SMT
- Dual USB 2.0 A Type Receptacle  
205G-AAN0-RA2, Dual Port  
205G-EAN0, Trip Port  
205G-FAN0, Dual Port Middle Mount

### Micro USB

- Micro USB 2.0 Receptacle SMT Standard  
207A-ABAO-R, AB Type  
207A-BBAO-R, B Type  
207A-BABO-01, B Type, DIP
- Micro USB 2.0 Receptacle SMT Middle Mount  
207E-BG00-R, B Type  
207E-BA00-RA1, B Type
- Micro USB 2.0 Receptacle Reverse Middle Mount  
207E-AG00, AB Type
- Micro USB 2.0 Receptacle SMT Vertical  
207F-BA00, B Type
- Micro USB 2.0 Receptacle Waterproof  
207G-BD00, B Type

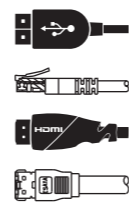
### Mini USB

- Mini USB 2.0 AB Type Receptacle  
202C-FBT0-R03, SMT Standard
- Mini USB 2.0 B Type Receptacle  
202A-FBNR-R03, SMT Standard  
202D-FBN0-R, Vertical, DIP  
202G-FDNO-R, Vertical, SMT

### USB 2.0

- USB 2.0+ E-SATA  
205G-BEN0
- USB 2.0 + RJ45  
205G-CCN0, USB x2
- USB 2.0 + HDMI  
205G-DEN0
- USB 3.0 + RJ45  
209G-CCN0, USB3.0x2

## Combo Connector



## USB 3.0 Connector

### Type C

- USB Type C R/A Hybrid Type  
217B-AG01
- USB Type C Middle Mount R/A Hybrid Type  
217C-AA01
- USB Type C R/A SMT Type  
217B-BC01
- USB Type C Vertical SMT Type  
217D-AG01

### USB 3.0

- USB 3.0 A Type Receptacle Flank DIP Type  
209B-DA04
- USB 3.0 A Type Plug Middle Mount SMT Type  
209A-SG03
- USB 3.0 A Type Receptacle R/A DIP Type, Shell DIP  
209B-DG01
- USB 3.0 A Type Receptacle Middle Mount R/A DIP Type  
209B-DG02
- USB 3.0 B Type Receptacle R/A DIP Type  
209D-DG01
- USB 3.0 A Type Receptacle R/A SMT Type, Shell SMT  
209B-SG01
- Dual USB 3.0 A Type Receptacle R/A DIP Type  
209B-DG03

### Micro USB 3.0

- Micro USB 3.0 B Type Receptacle R/A SMT Type, Shell DIP  
209E-BE01
- Micro USB 3.0 B Type Receptacle R/A SMT Type, Shell SMT  
209E-BE00

HDMI Connector



A Type



HDMI A Type Receptacle R/A SMT Type  
206A-SEAN-R03, Shell DIP  
206A-SABN, Shell SMT



HDMI A Type Receptacle w/Flange Vertical SMT Type, Straight  
206F-SEAN-RA1



HDMI A Type Receptacle w/Flange R/A SMT Type  
206B-SEAN-R01, Shell DIP  
206B-SABN, Shell SMT

C Type



HDMI C Type Receptacle R/A SMT Type, Shell DIP  
206G-SGAN-R01

D Type



HDMI D Type Receptacle R/A SMT Type, Shell DIP  
206H-SDAN-R01



HDMI D Type Middle Mount, Shell SMT  
206H-SABN

SPDIF Connector



SPDIF+RCA  
302B-TBA0-RA1

RJ45 Jack



Shielded Type



RJ45 Jack Shielded Type, w/ LED  
211C-12CAA, Y+G (1X2)  
211C-14CAA, Y+G (1X4)



RJ45 Jack Shielded Type, w/o LED

210A-11C0A-R, (1X)  
210A-11C0B-R, (1X)

w/EMI Tab

210A-21C0A-R, (2X1)  
210A-22C0A-R, (2X2)  
210A-24C0A-R, (2X4)  
210A-26C0A-R, (2X6)  
210A-28C0A-R, (2X8)

w/o EMI Tab

210A-21C0B-R, (2X1)  
210A-22C0B-R, (2X2)  
210A-24C0B-R, (2X4)  
210A-26C0B-R, (2X6)  
210A-28C0B-R, (2X8)  
210A-12C0B-R, (1X2)  
210A-14C0B-R, (1X4)



RJ45 Jack Shielded Type, w/ LED

w/EMI Tab

211A-11CAA-R01, (1X1)  
211A-12CAA-R, (1X2)  
211A-14CAA-R, (1X4)  
211A-16CAA-R, (1X6)  
211A-16CAC-R01, (1X6), Y/G+G/Y

w/o EMI Tab

211A-11CBA-R01, (1X1)  
211A-12CBA-R, (1X2)



RJ45 Jack Shielded Type, w/ LED

211A-21CAA-R, (2x1)  
211A-22CAA-R, (2x2)  
211A-24CAA-R, (2x4)  
211A-26CAA-R, (2x6)  
211A-28CAA-R, (2x8)



RJ45 Jack SMT Type  
210A-11C0B-RA4, Sink = 3.1mm



RJ45 Jack Shielded Type, w/o LED Vertical DIP Type  
210A-11C0A-RA10

High Speed Type



RJ45 Jack Shielded Type, High Speed Cat 5e Type  
210C-11CA0



RJ45 Jack Plastic Type, High Speed Cat 5e Type  
210C-11CE0



RJ45 Jack Shielded Type, High Speed Cat 6 Type  
210D-11CB1, Upper Latch  
210D-11CB2, Bottom Latch  
210D-11CB3, 47.5° Upper Latch

Magnetic Type



RJ45 Jack Magnetic Gigabit Type, Vertical Type, w/LED  
213B-11CBA



RJ45 Jack Magnetic Gigabit Type, w/LED  
213B-11CAD-01, 1X1, Standard  
213B-14CAA, 1X4, Bottom Latch  
213B-14CAB-01, 1X4, Upper Latch



RJ45 Jack Magnetic Type, w/ LED  
213A-12CAA-RA12, 1X2 Bottom Latch  
213A-14CAA-RA14, 1X4 Upper Latch



RJ45 Jack Magnetic Type, w/ LED  
213A-22CAC-01, 2X2  
213A-24CAC-01, 2X4



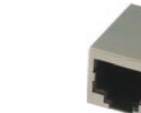
RJ45 Jack Magnetic Gigabit Type, w/o LED  
212B-14CA0, 1X4 Upper Latch



RJ45 Jack Magnetic Type, w/o LED  
212A-11CA0-R, Bottom Latch  
212A-11CA0-R13, Upper Latch  
212A-11CA0-R14, Upper Latch, Gigabit



RJ45 Jack Magnetic Type, w/o LED  
212A-11CA0-RA9, 1X1, Bottom Latch  
212A-12CA0-RA10, 1X2, Bottom Latch  
212A-14CA0-RA11, 1X4, Bottom Latch  
212A-14CA0-RA12, 1X4, Upper Latch



RJ45 Jack Magnetic Type, w/o LED  
212A-11CC0-RA7, Sink=2.8mm, Gigabit  
212A-11CD0-RA8, Sink=2.8mm, 10/100 Base-T



RJ45 Jack Magnetic Type, w/LED  
213A-11CAA-R, Bottom Latch  
213A-11CAA-RA13, Upper Latch  
213A-11CBA-RA13, Upper Latch, w/o EMI

PoE



RJ45 Jack Gigabit Type, PoE w/EMI Tab  
214B-11CA0, w/o LED  
214B-11CAA, w/ LED, Y+G



RJ45 Jack 10/100 Type, PoE w/EMI Tab w/LED  
214A-11CAA, Y+G  
214A-11CAB, G+Y

Plastic Type



RJ45 Jack Plastic Type, w/o LED  
Upper Latch  
210B-66CA0-R, (6P6C)  
210B-64CA0-R, (6P4C)  
210B-62CA0-R, (6P2C)  
Bottom latch  
210B-66CB0-R, (6P6C)  
210B-64CB0-R, (6P4C)  
210B-62CB0-R, (6P2C)  
210B-44CB0-R, (4P4C)



RJ45 Jack Plastic Type, w/LED, Upper Latch  
211B-12C0A-R, (1X2)  
211B-14C0A-R, (1X4)  
w/o LED, Bottom latch  
211B-12A00-RA19, (1X2)  
211B-14A00-RA20, (1X4)  
211B-18A00-RA21, (1X8)



RJ45 Jack Plastic Type, w/ LED  
211B-21C0A-RA18



RJ45 Jack Plastic Type, w/o LED  
211B-21A00-R22, (2x1)  
211B-22C00-R, (2x2)  
211B-23C00-R, (2x3)  
211B-24C00-R, (2x4)  
211B-25C00-R, (2x5)  
211B-26C00-R, (2x6)  
211B-28C00-R, (2x8)



RJ45 Jack Plastic Type  
210B-88CA0-R, Upper Latch  
210B-88CB0-R, Bottom Latch  
211B-11C0A-R, w/LED  
211B-11C00-R, w/o LED



RJ45 Jack Plastic Type, Vertical, w/LED  
211B-11C0B-01



SFP  
SFP+  
QSFP  
Connector



SFP



SFP Connector  
223A-00C0, SMT Type

SFP Cage  
Press Fit Type  
223A-1101

SFP Cage  
Through Hole Type  
223A-1102

SFP Cage  
Press Fit Type, w/Light Pipe  
223A-1105

SFP Cage  
Press Fit Type  
223A-1401, 1X4

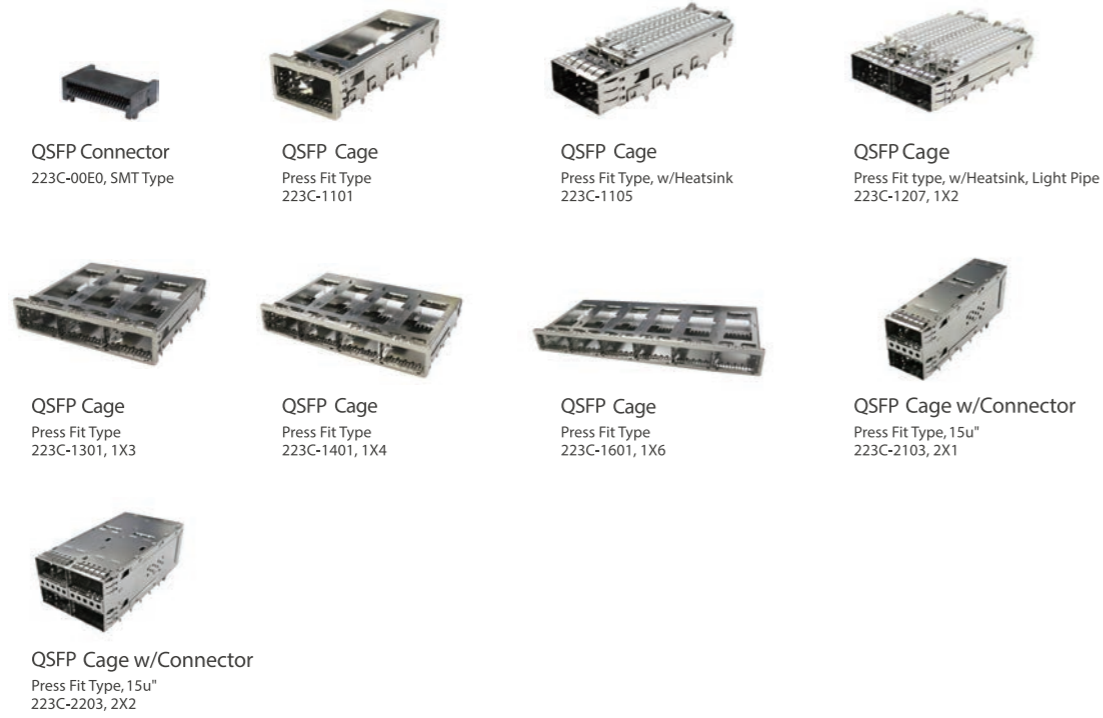
SFP+



SFP+ Cage  
Through Hole Type  
223B-1102

SFP+ Cage  
Through Hole Type, w/Light Pipe  
223B-1106

QSFP



QSFP Connector  
223C-00E0, SMT Type

QSFP Cage  
Press Fit Type  
223C-1101

QSFP Cage  
Press Fit Type, w/Heatsink  
223C-1105

QSFP Cage  
Press Fit type, w/Heatsink, Light Pipe  
223C-1207, 1X2

QSFP Cage  
Press Fit Type  
223C-1301, 1X3

QSFP Cage  
Press Fit Type  
223C-1401, 1X4

QSFP Cage  
Press Fit Type  
223C-1601, 1X6

QSFP Cage w/Connector  
Press Fit Type, 15u"  
223C-2203, 2X2

SFP Transceivers



SFP Transceiver  
224A-BAXX5-00, 850nm 0.5km  
224A-BB010-00, 1310nm 10km

SFP BiDi Transceiver  
224B-BB010-00, 1310nm 10km  
224B-BC010-00, 1550nm 10km

SFP+ Transceiver  
224C-AAXX3-00, 850nm 0.3km  
224C-AB010-00, 1310nm 10km

Sealed I/O  
connector



Receptacle



Micro USB 2.0 B Type,  
R/A SMT Type  
207G-BD00

USB 2.0 A Type  
222A-01001

HDMI A Type  
222A-02001



RJ45 8P8C  
222A-03001

Mini USB B Type  
222A-04001

Mini SIM Type  
222A-05001, Front Fastened  
222A-05002, Rear Fastened

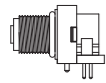
Accessory



USB/HDMI dust cover  
222A-00001

Mini SIM dust cap  
222A-05003

M5



Receptacle

Front Fastened



Male, Straight Type  
220A-04MSF



Male, R/A Type  
220A-04MRF



Female, Straight Type  
220A-04FSF



Female, R/A Type  
220A-04FRF

Plug for Cable

Overmold with Cable

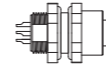


Male  
220A-04MO0

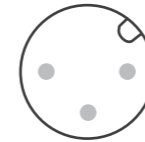


Female  
220A-04FO0

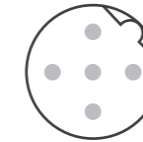
M12



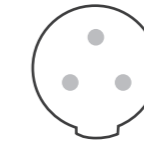
Contact Configuration



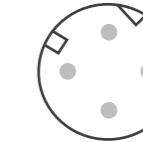
A code



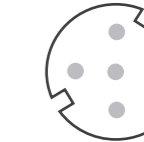
B code



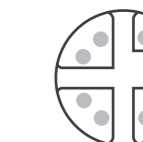
C code



D code



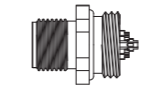
P code



X code

Receptacle

Rear Fastened



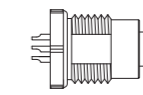
Cable Solder Type



Male  
216A-02MAR  
216A-08MAR  
216A-12MAR  
216A-05MAR



Female  
216A-05FAR  
216A-08FAR  
216X-08FSR, Straight



Cable Solder Type

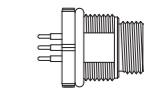


Male  
216A-02MAF  
216A-04MAF  
216A-05MAF  
216A-08MAF  
216D-04MAF



Female  
216A-04FAF  
216A-05FAF  
216A-08FAF  
216A-10FAF  
216A-12FAF  
216D-04FAF  
216X-08FAF

Front Fastened



PCB Through hole Type



Male  
216A-04MSF  
216A-05MSF  
216A-08MSF  
216A-10MSF  
216A-12MSF  
216A-12MSR, Straight  
216A-08MRF, R/A Type



Female  
216A-04FSF  
216A-05FSF  
216A-08FSF  
216A-12FSF  
216D-04FSF  
216X-08FSF  
216A-08FRF, R/A Type

Plug for Cable

Overmold with Cable



Male  
216A-04MO0  
216A-05MO0  
216A-08MO0  
216A-10MO0  
216A-12MO0  
216D-04MO0  
216X-08MO0



Female  
216A-02FO0  
216A-04FO0  
216A-05FO0  
216A-08FO0  
216A-10FO0  
216A-12FO0, w/ground Pin  
216A-12FO0-01  
216D-04FO0

Install with Cable

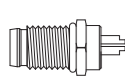


Male  
216A-05MF0  
216A-08MF0



Female  
216A-05FF0  
216A-08FF0

M8



Receptacle

Front Fastened



Male, Straight Type  
219A-04MSF



Male, Solder Type  
219A-04MAF



Male, Solder Type  
219A-05MAF



Female, Straight Type  
219A-02FSF



Female, Solder Type  
219A-03FAF

Rear Fastened



Male, Straight Type  
219A-04MSR



Male, Solder Type  
219A-04MAR



Female, Solder Type  
219A-05FAR

Plug for Cable

Overmold with Cable



Male  
219A-04MO0



Female  
219A-04FO0

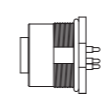


Male  
219A-05MO0



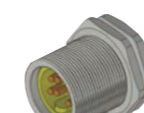
Female  
219A-05FO0

M23



Receptacle

Front Fastened



Male  
221A-06MSF



Female  
221A-05FSF

Rear Fastened



Male  
221A-06MSR

Plug for Cable

Overmold with Cable



Male  
221A-04MO0

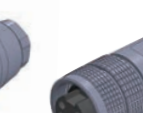


Female  
221A-05FO0

Install with Cable



Male  
221A-05MF0



Female  
221A-05FF0

# Pogo Pin



Fly Type

Plug in Type

Bending Type

Right Angle Type

Double Ends



Pogo Pin, Multiple Contacts

- Fly Type
- Right Angle Type
- Plug in Type
- Double Ends
- Bending Type

## Single Pin Type



Pogo Pin  
303A-361420-000  
1 Pin T/L 5.0mm, w/H 3.6mm  
303A-250918-002  
1 Pin T/L 3.4mm, w/H 2.6mm

## Multiple Pin



Pogo Pin, Right Angle Type  
303B-351819-25-000  
2 Pin PH 2.5mm, T/L 5.3mm, w/H 3.9mm



Pogo Pin  
303B-361420-25-02  
2 Pin PH 2.5mm, T/L 5.0mm, w/H 3.6mm



Pogo Pin  
303B-361420-25-03  
3 Pin PH 2.5mm, T/L 5.0mm, w/H 3.6mm



Pogo Pin  
303B-361420-25-04  
4 Pin PH 2.5mm, T/L 5.0mm, w/H 3.6mm



Pogo Pin  
303B-361420-30-000  
2 Pin PH 3.0mm, T/L 5.0mm, w/H 3.6mm



Pogo Pin, Right Angle Type  
303C-451415-30-03  
3 Pin PH 3.0mm, T/L 5.7mm, w/H 4.3mm

## Waterproof Type



Pogo Pin, Waterproof Type  
303C-541219-25-05, w/o Cap  
5 Pin PH 2.5mm, T/L 6.6mm, w/H 5.4mm



Pogo Pin, Waterproof Type  
303C-C3018-25-05, w/o Cap  
5 Pin PH 2.5mm, T/L 3mm

# Micro Coaxial RF



Micro Coaxial RF Connector  
321A-33125, H=1.25mm  
321B-22085, H=0.85mm  
321C-22060, H=0.6mm

# DC high power



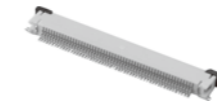
High Power Battery Socket  
304B-1716SA, PH1.7mm  
12+4 Pin



High Power Battery Plug  
304B-1716PA, PH1.7mm  
12+4 Pin

# FPC

## Slide-Lock Type



FPC, Horizontal  
311A-XXUAA-R, Upper Contact  
311A-XXLAA-R, Lower Contact  
PH 0.5mm, H=2.0mm



FPC, Horizontal  
313A-XXUAA-R, Upper Contact  
313A-XXLAA-R, Lower Contact  
PH 0.5mm, H=1.2mm



FPC, Vertical  
312A-XXNAA-R  
312A-XXRAA-R, Reverse  
PH 0.5mm, H=2.0mm



FPC, Vertical  
312B-XXNAA  
312B-XXRAA, Reverse  
PH 1.0mm, H=2.0mm



FPC Connector Horizontal type  
311B-XXUAA, Upper  
311B-XXLAA, Lower  
PH 1.0mm, H=2.0mm

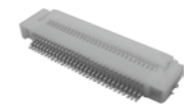
## Flip - Lock Type



FPC, Horizontal  
317B-XXBAA, Front Flip Type  
PH 0.3mm, H= 1.0 mm



FPC, Horizontal  
317A-XXBCA, Back Flip Type  
PH 0.3mm, H=0.9mm



FPC, Horizontal  
314A-XXBAA-R, PH 0.5mm, H=2.0mm  
314C-XXBAA-R, PH 0.5mm, H=2.5mm  
315A-XXBAA-R01, PH 0.5mm, H=0.9mm  
315A-45BAA-R, PH 0.5mm, H=0.9mm



FPC, Middle Mount  
316B-XXBAA-R  
PH 0.5mm, H=1.5 mm



FPC, Horizontal  
314C-XXBAA-R  
PH 0.5mm, H=2.5mm  
40 Pin, 60 Pin

Customization  
Design-in  
Advance tooling technology



## World Class Cable Assembly Solutions

### Our Core Competence



Customization

**Communication**  
Our well-trained R&D personnel and professional engineers can not only clearly understand your requirement, but also provide you the most appropriate solution.

**One-stop package service**  
During the period from prototype to mass production, ATTEND can provide the variety of wire, molding, PCB components.

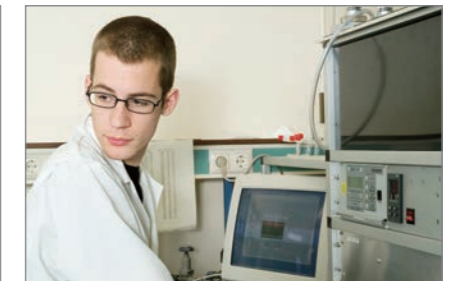


Manufacture

**Molding**  
• Component Material: PVC, TPE, PU

**Cable**  
• Insulation: PP, PE, PVC, SR-PVC, Hytel, TPE  
• Jack Material: PVC, TPE, PU  
• Format: Coiled Cable, Flat Cable, Custom Material

**Specialty**  
• Waterproof, Anti oil, Anti UV



Testing

We can provide various testing reports of prototype on demand. With the following tests, we have competence to improve the prototype's format, function, and lower its costs.



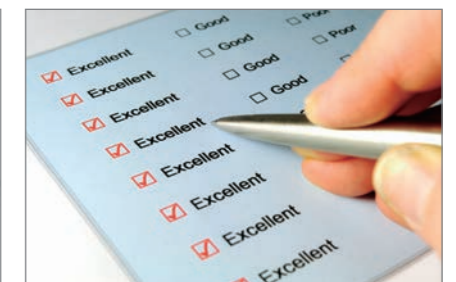
Logistic

ATTEND's superior international logistics management can rise the efficiency of manufacture, stock and shipment. Therefore, you can enjoy a faster and more stable delivery process.



Problem-solving & Customer Service

Our clients will get response in 24 hour, and realize the crux of the problem very soon. Moreover, we will provide 8D report to help you solve the problem thoroughly.

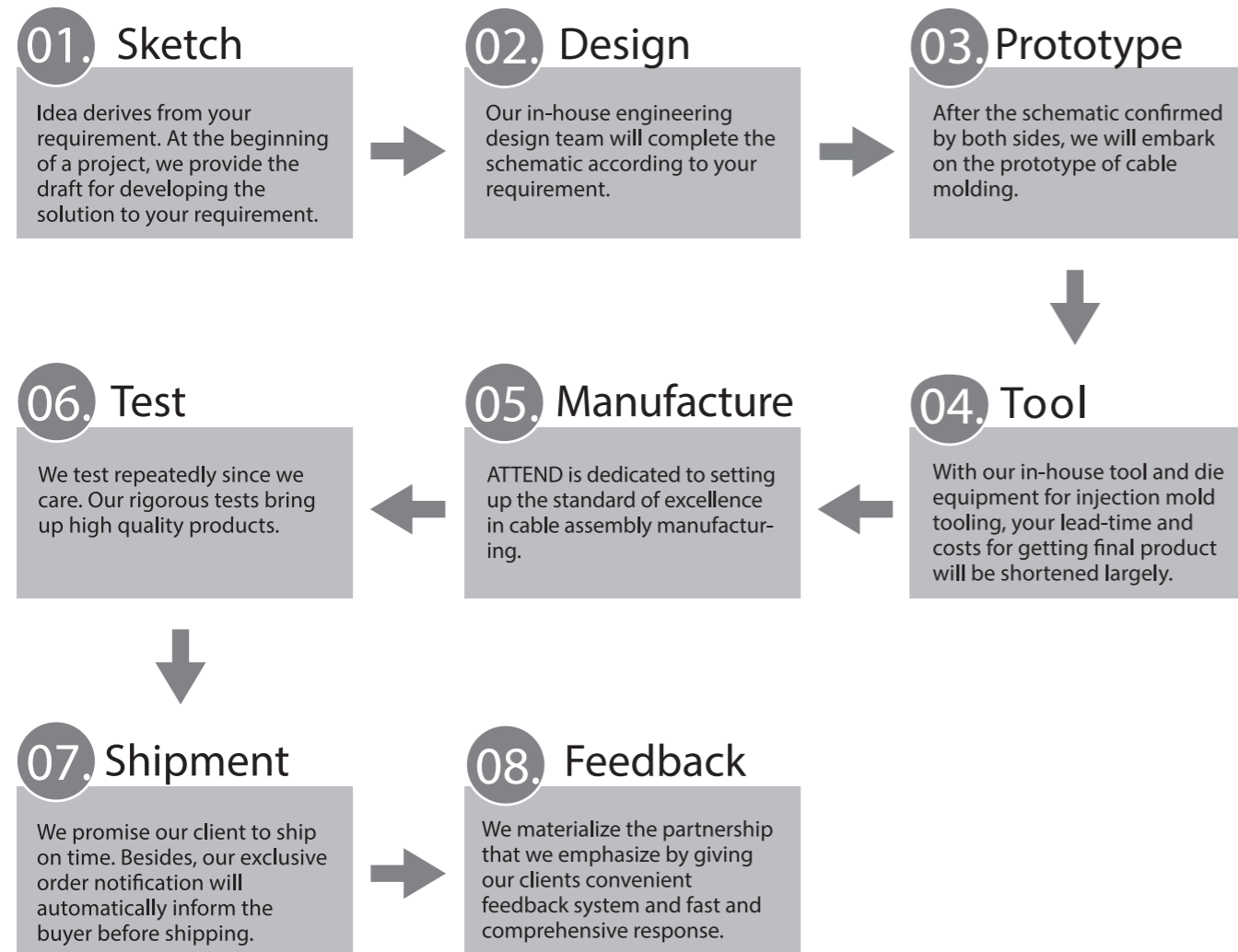


Quality Declaration

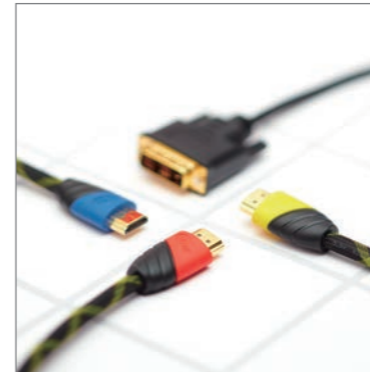
We have confidence that our clients have a great purchasing experience with us. You are our precious partner. Your success is the catalyst to ours.

## How We Customize Cable Assemblies

We can satisfy all your demand for cable assembly, including design, manufacture, and even after-sale service. We welcome you to talk about your any idea related to cable.



### Audio/Video



- RCA
- Mini Din
- Audio
- Video
- VGA To S-Video
- VGA To RGB

### Storage



- SATA
- USB2.0/3.0
- HDMI
- Mirco USB
- Mini USB
- Flat CABLE
- FFC CABLE

### Data Transfer



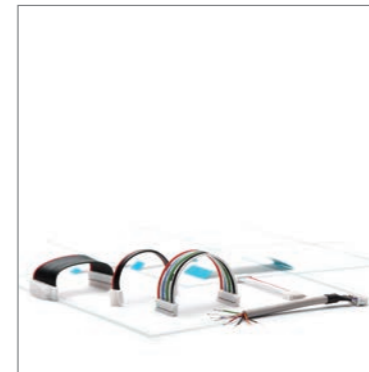
- D-SUB To RJ45
- DC Jack \ Plug
- USB To Mini B
- USB M/F To RJ45
- USB To Mirco B
- D-SUB To D-SUB
- USB M/F To D-SUB

### Networking



- CAT5E
- CAT6

### Board to Board



- Board To Wire
- Board To Board
- Wire to Wire
- FFC
- FPC

### Industrial



- M8
- M12
- M16
- DIN Plug

### High Frequency



- RF Cable Assemblies

### Automation



- Robotics Cable
- Machine Vision Systems Cable
- Industrial Automated Machinery Cable
- Large Storage Systems Cable
- HPC (High Performance Computer) Systems Cable



**Any**  
Customer-made  
Cable Assembly

